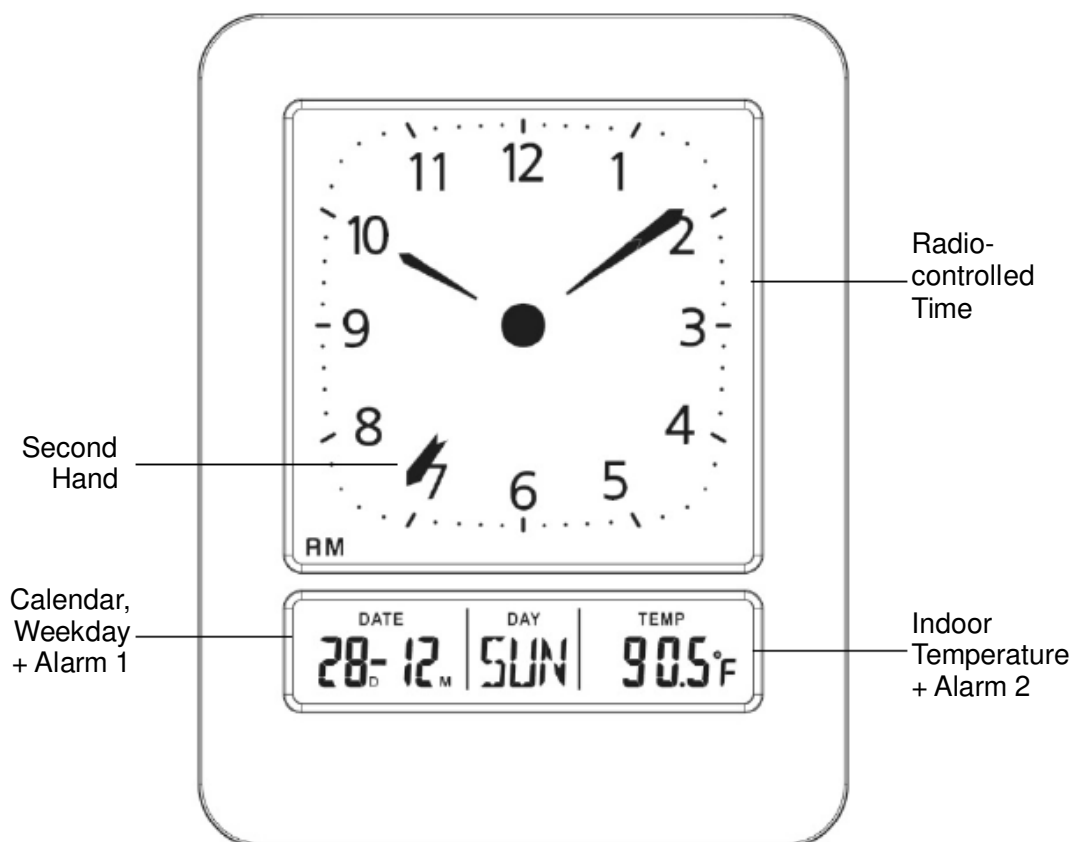
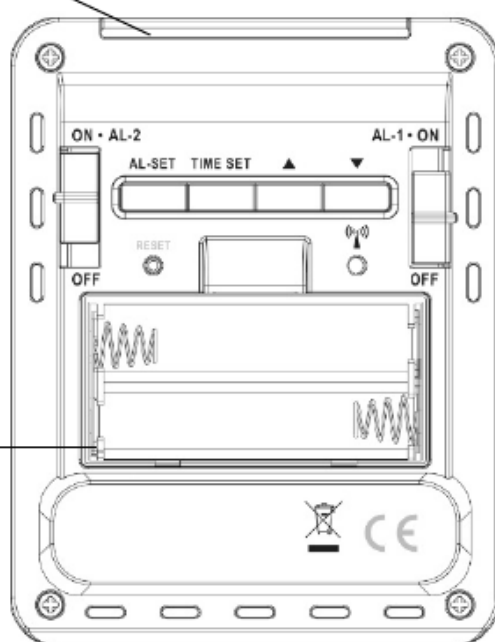
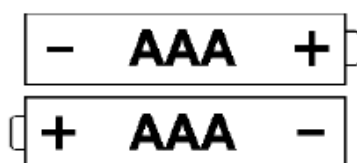
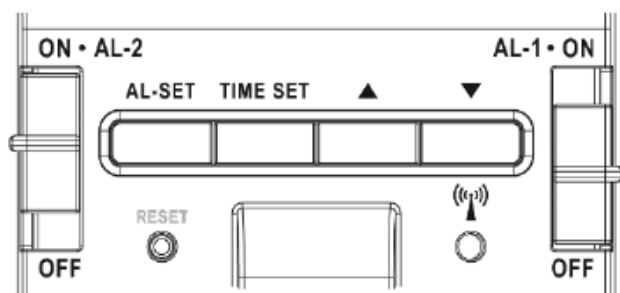


ATOMIC DIGITAL/ ANALOG ALARM CLOCK



Snooze Button

BUTTONS



Get Started

1. Insert 2 *new* AAA Alkaline batteries (not included) into the alarm clock. Observe the correct polarity.

Restart: If there is no indoor temperature data after 60 seconds, remove batteries from the alarm clock, press any button 20 times. After 15 minutes, start again.

Set Time, Date, etc.

1. Hold the **TIME SET** button for 5 seconds, to enter time set mode.
2. Press the ▲ or ▼ buttons to adjust values.
3. Press the **TIME SET** button to confirm adjustments and move to the next item.

Setting Order:

1. RCC time signal (On/Off)
2. 12/24 hour time format
Note: 12-hour time = Month/Date display
24-hour time = Day/Month display
3. Time Zone - 4 time zones
4. Hour
5. Minutes
6. Year
7. Month
8. Date (day of the week sets automatically)
9. DST (Daylight Saving Time On/Off)
10. Fahrenheit/Celsius (°F or °C)

P	Pacific
M	Mountain
C	Central
E	Eastern

Press the **TIME SET** button to exit, or wait 15 seconds without pressing buttons to return to the normal time display.

Date Display

The date may be displayed as the Month/Date format or as the Date/Month format.



1. Press the **▲** button to select **12**-hour time and the **Month/ Date** format.
2. Press the **▲** button again to select **24**-hour time and the **Date/ Month** format.

Note: From the time display, press the **TIME SET** button to select Month/Date or Year to display in the lower left-hand corner.

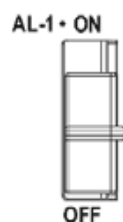
Set Alarm 1 or Alarm 2

The clock has two separate time alarms. Setting the alarms and activating the alarms are separate actions.

1. Hold the **AL-SET** button for 2 seconds to enter alarm time set mode for Alarm 1.
2. Press the **▲** or **▼** buttons to adjust the alarm time. The minutes and hours are set together.
3. Hold the **▲** or **▼** buttons to change quickly.
4. Press the **AL-SET** button to confirm and move to Alarm 2.
5. Press the **▲** or **▼** buttons to adjust the alarm time. The minutes and hours are set together.
6. Hold the **▲** or **▼** buttons to change quickly.
7. Press the **AL-SET** button to confirm and exit.

Activate/ Deactivate Alarm 1 and Alarm 2

- To activate or deactivate Alarm 1 or Alarm 2, use the slide bars on the back of the clock.
- There is a slide bar (ON/OFF) for **AL 1** and for **AL 2**.
- When active, Alarm 1 will show in the Date display with alarm icon.
- When active, Alarm 2 will show in the Temperature display with alarm icon.



Snooze

- When alarm sounds, press the **SNOOZE/ LIGHT** button to silence the alarm for 5 minutes.
- The alarm icon will flash.



- Snooze may be repeated up to 7 times.
- In snooze mode, press any button except SNOOZE/LIGHT to stop alarm for one day.

Note: The alarm is crescendo sound. The alarm will sound for 2 minutes and then shut off completely if no buttons are pressed.

Backlight

Press the **SNOOZE/ LIGHT** button to activate the backlight for 15 seconds.



Atomic Time Signal Search

- Hold the ▼ button to start or stop a WWVB signal search.
- WWVB Icon will flash when searching.



For information about WWVB visit:
www.nist.gov/pml/div688/grp40/wwvb.cfm

Tip: When batteries are inserted, the alarm clock will start searching. If there is no WWVB reception, the alarm clock will search the WWVB time signal every hour until the WWVB time is received. After reception, this alarm clock will automatically search for the atomic signal daily at 2:00am.

Reset Button

- If the display of the alarm clock is distorted or the alarm clock is not functioning properly, check that batteries are fresh and press the **RESET** button one time.
- The alarm clock will fully populate then return to default settings.

Position Alarm Clock

- Position the alarm clock six feet from other electronics for best WWVB reception.
- Have the front or back of the alarm clock facing Colorado.

Care and Maintenance

- Do not mix old and new batteries
- Do not mix Alkaline, Standard, Lithium, or Rechargeable Batteries
- Always purchase the correct size and grade of battery suitable for the intended use.
- Replace all batteries of a set at the same time.

- Clean the battery contacts and also those of the device prior to battery installation.
- Ensure the batteries are installed correctly in regard to polarity (+/-).
- Remove batteries from equipment when it is not to be used for an extended period.
- Promptly remove expired batteries.

Specifications	
Indoor:	
Temperature Range: 14.1°F to 122°F (-9.9°C to 50°C)	
Power:	
Battery:	2-AAA, IEC, LR3 batteries (not included)
Battery Life:	
Battery Life:	Battery life is over 12 months
Dimensions:	
Alarm Clock:	3.65" T x 2.85" W x 1.75" D inches (92.71 x 72.39 x 44.45 mm)

Warranty and Support

La Crosse Technology, Ltd. provides a 1-year limited time warranty (from date of purchase) on this product relating to manufacturing defects in materials & workmanship.

Before returning a product, please contact our friendly customer support with questions or visit our online help (manuals and FAQs):

Phone: 1-608-782-1610

Online Product Support: www.lacrossetechnology.com/support

Product Registration:

www.lacrossetechnology.com/support/register

View full warranty details online at:

www.lacrossetechnology.com/warranty_info.pdf

Warranty Address:

La Crosse Technology, Ltd
 2830 S. 26th St.
 La Crosse, WI 54601



FCC Statement

This equipment has been tested and found to comply with the limits for a Class B digital device, pursuant to part 15 of the FCC Rules. These limits are designed to provide reasonable protection against harmful interference in a residential installation. This equipment generates, uses and can radiate radio frequency energy and, if not installed and used in accordance with the instructions, may cause harmful interference to radio communications. However, there is no guarantee that interference will not occur in a particular installation. If this equipment does cause harmful interference to radio or television reception, which can be determined by turning the equipment off and on, the user is encouraged to try to correct the interference by one or more of the following measures:

- Reorient or relocate the receiving antenna.
- Increase the separation between the equipment and receiver.
- Connect the equipment into an outlet on a circuit different from that to which the receiver is connected.
- Consult the dealer or an experienced radio/TV technician for help.

This device must not be co-located or operating in conjunction with any other antenna or transmitter.

Operation is subject to the following two conditions:

- (1) This device may not cause harmful interference, and
- (2) This device must accept any interference received, including interference that may cause undesired operation.

Caution!

The manufacturer is not responsible for any radio or TV interference caused by unauthorized modifications to this equipment. Such modifications could void the user authority to operate the equipment.

All rights reserved. This manual may not be reproduced in any form, even in part, or duplicated or processed using electronic, mechanical or chemical process without the written permission of the publisher. This booklet may contain errors or misprints. The information it contains is regularly checked and corrections are included in subsequent editions. We disclaim any responsibility for any technical error or printing error, or their consequences.

All trademarks and patents are recognized.